

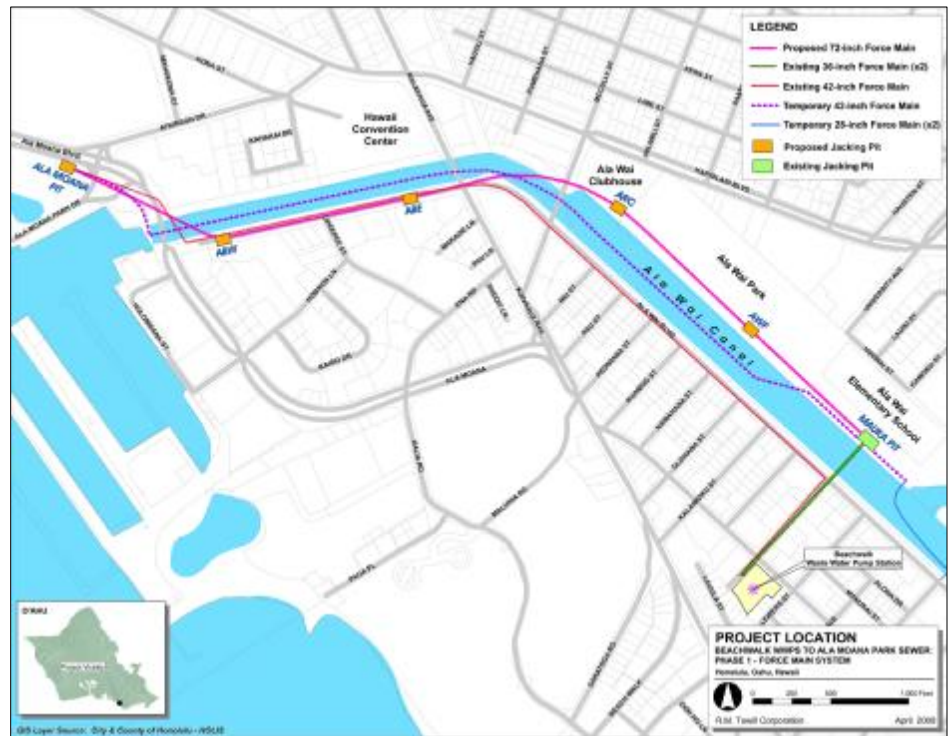


Waikiki Wiki Wiki Wire

Beachwalk Bypass Project Finished: Emergency Pipes to be Removed

Mayor Mufi Hannemann has announced that the City will construct a new sewage force main pipeline that will stretch underground from Mō'ili'ili to Ala Moana Park. "We continue our commitment to addressing our City's wastewater infrastructure needs," said Mayor Hannemann. "I'm proud that my administration has made great improvements to our aging sewer system, and continues to do so."

Once completed, the new line will result in the removal of above ground sewer pipes now located on the mauka side of the Ala Wai Canal and at the entrance to Ala Moana Beach Park. The large black pipe on the bottom of the Ala Wai Canal will also be floated and removed. Those temporary pipes are a visual reminder of an emergency wastewater project the city undertook following a break in an aging force main under Kaiolu Street in Waikiki in March 2006. That project, called the Beachwalk Wastewater Emergency Bypass, was completed earlier this year. The bypass project, and a backup line that was rehabilitated, provides the city two reliable ways to transport wastewater out of Waikiki. Now that BWEB is complete, the city will build a 5,800 foot stretch of wastewater line called the Beachwalk Force Main system.



Continued on next page

Inside this issue:

Aloha Friday luncheon shows set for 2010 at Outrigger Reef on the Beach	2
Hyatt Regency Waikiki Beach Resort and Spa debuts three signature Kenwood wines	3
A Sweet Suite Deal	3
Twist at Hanohano to offer romantic four-course menu throughout Valentine's weekend	4
Bali Steak & Seafood Valentine's Day sweethearts dinner	5

Award-winning Azure Restaurant presents a delectably romantic four-course Valentine's menu	6
'For the Love of Cocktails' - a Valentine's Weekend at Lewers Lounge, Halekulani	7
Outrigger hosts annual Valentine's Day Vow-Renewal Ceremony	8
News from Royal Star	9
Waikiki Hula Show at the Kūhiō Beach Hula Mound	9

... and MORE

Continued from front page

It will run from behind Ala Wai Elementary School to the Diamond Head end of Ala Moana Park. The line will cross under the Ala Wai Canal near the Ala Wai Clubhouse, and will run alongside the canal along Ala Wai Boulevard before crossing back under the canal and ending at Ala Moana Park. A map is posted on this website. Like the emergency project that preceded it, this new project will be built through the micro tunneling process, meaning very limited trenching. The city will build five jacking pits or shafts along the route to load the 72-inch pipes underground.

To avoid a repeat of the emergency pile driving required in the BWEB project, the city has secured equipment that will greatly lessen the noise associated with the construction of jacking pits. Contractor Frank Coluccio has purchased a pile press, also called a "silent piler" that pushes rather than pounds beams of steel into the ground. The machine, built in Japan, is being used to build jacking pits on a wastewater project in Waimalu.

The five shafts will be built in sequences, with the first two on the stretch of Ala Wai Boulevard that dead ends near Ala Moana Boulevard. Roughly a third of the free on street parking used by area residents will be impacted over the duration of this project. Once those two shafts are complete, contractors will build a third one near the Moana Pump Station at Ala Moana Beach Park. The final two will be built on the mauka side of the Ala Wai Canal. One will be near the Ala Wai Clubhouse, and the final one alongside the canal in Ala Wai Park. The shafts allow the contractors to microtunnel and load the wastewater pipes underground to avoid open trenching.

Once finished the new line will connect to the newly constructed lines in the mauka vault behind Ala Wai School. Those 1,200 foot lines connect to the Beachwalk Pump Station at the corner of Kaiolu Street and Kūhiō Avenue. As part of BWEB, the city also rehabilitated the existing 42-inch line that starts at the Beachwalk Pump Station and ends at the Moana Pump Station. That means the city now has two ways to transport wastewater out of Waikīkī, and that will continue once the new line is built and the emergency lines are removed from the canal. The project is expected to cost \$37 million and will take three years to complete.

For further information call 808-543-8374, or log onto our website www.beachwalkforcemain.com

Aloha Friday luncheon shows set for 2010 at Outrigger Reef on the Beach

Enjoy a tasty island lunch with great local entertainment; but if you can't be there in person, listen in on AM940 or log on from anywhere in the world at AM940Hawaii.com

One of the most quintessential Hawaiian experiences you can have is to hang out near the beach with family and friends along with great local food and great island music. That's what's in store in 2010 with the Outrigger Reef's Aloha Friday luncheon shows at the Kani Ka Pila Grille. But if you can't be there in person, the luncheon show is broadcast live in Hawaii from 12 noon to 1 p.m. (HST) on AM940 and is also streamed live around the world on AM940Hawaii.com for all the enjoy.



Mark your calendars for February 12, April 23, June 11, September 3 and November 12, from 11:30 a.m. to 1 p.m., for a true local experience that includes great island entertainment and a delicious Hawaiian buffet.

Past performers have included Raiatea Helm, Na Leo, Brother Noland, Jeff Rassmussen, Waipuna, and Danny Couch, just to name a few. The luncheon buffet is filled with island favorites like Grilled Mahi-Mahi, Lau Lau, Shoyu Chicken, Kalua Pork, Lomi Salmon, Fresh Salads, and more.

The Aloha Friday luncheon show is priced at \$25 per person tax/tip inclusive, with \$5 validated valet parking. For reservations, call (808) 924-4990.

Hyatt Regency Waikiki Beach Resort and Spa debuts three signature Kenwood wines

Ciao Mein and The Colony restaurants in Hyatt Regency Waikiki Beach Resort and Spa, located at 2424 Kalākaua Avenue, are offering a new signature series of wines available from Friday, January 15 through Thursday, April 15, 2010. The classic varietals from the acclaimed Kenwood Vineyards in Sonoma County, California include the Jack London Vineyard 2005 Merlot (\$56 per bottle, \$14 per glass), the Jack London Vineyard 30th Anniversary 2006 Cabernet Sauvignon (\$72 per bottle, \$18 per glass), and the Yulupa Vineyard 2008 Chardonnay (\$40 per bottle, \$10 per glass).

Founded in 1970, Kenwood Vineyards is recognized for its classic varietals. The wines selected for the yearlong series offered by Hyatt Regency Waikiki Beach Resort and Spa are rich in flavor and complimentary to the award winning cuisine at Hyatt restaurants. The current signature selections include: a robust 2005 Merlot with an abundance of full-bodied flavor, a zesty yet sweet Cabernet Sauvignon, and a refreshing 2008 Chardonnay that offers hints of sage and mint.

For more information about Kenwood Vineyards, please visit www.kenwoodvineyards.com. Ciao Mein and The Colony restaurants are open from 6 to 10 p.m., daily. For more information, please call (808) 923-CIAO (2426) or (808) 237-6140.



A Sweet Suite Deal

Starwood Hotels & Resorts in Hawai'i offers a sweeter incentive for people thinking of booking an Endless Escape in the islands. Starting January 1, 2010, Starwood will offer a Suite Endless Escape bonus promotion to already attractive room rates. For an additional \$99 a night on an Endless Escape Ocean Front category room rate, Starwood will provide an upgrade to a suite to enhance your stay at any one of its eleven resorts throughout the Hawaiian Islands.

Book an Ocean Front room at the Sheraton Waikiki for an Endless Escape rate starting from \$245 a night, and for an additional \$99 a night (total: \$344 a night), the hotel will upgrade you to a Diamond Head Junior Suite overlooking Waikiki Beach with Honolulu's iconic – but long extinct! – volcanic peak as a backdrop.



For details about Starwood Hotels & Resorts Endless Escape rates and Suite Endless Escape visit <http://www.starwoodhotelshawaii.com/landing-pages/media-center/press-releases/a-sweet-suite-deal/>

Book your "Suite Endless Escape" from now until March 31, 2010 for travel from January 3 to June 30, 2010. Suite upgrades are subject to availability. For more further information about Starwood Hotels & Resorts in Hawai'i or to make your reservations, please call toll free at 1-866- 716-8140, visit www.suiteendlessescape.com or book through your preferred travel professional.

Twist at Hanohano to offer romantic four-course menu throughout Valentine's weekend

With breathtaking views of O'ahu's entire south shore, Twist at Hanohano is set to offer Honolulu's most romantic evening 30-flights above Waikiki Beach with a four-course Valentine's menu by award-winning Chef Ryan Loo February 12 - 14.

Chef Loo's Valentine's menu will be created with ingredients sourced from various areas in Hawaii and include a complimentary heart-shaped chocolate and rose for each table. This delectable menu will be offered for \$95, \$123 with wine pairings, and \$151 with executive wine pairing.

First

serrano ham and yellow fin ahi carpaccio with pickled baby beets, kula hydroponic watercress and maui goat cheese

(regular wine pairing: chandon brut rose sparkling wine)

(executive wine pairing: "J" brut rose sparkling wine)

Second

kona lobster and vanilla butter-poached hamakua hearts of palm with blood orange essence and osetra caviar

(regular wine pairing: parducci sauvignon blanc, mendocino county)

(executive wine pairing: chalk hill sauvignon blanc, russian river)

Intermezzo

chilled kumomoto oyster with champagne and magenta chiso gelee

Third

twisted veal "oscar" with king crab croquette, twin bridge farms Waialua asparagus and bearnaise foam

(regular wine pairing: paul dolan cabernet sauvignon, mendocino county)

(executive wine pairing: mt. veeder cabernet sauvignon, napa valley)

Fourth

white chocolate and haupia panna cotta with strawberry and basil soup, macadamia nuts and cinnamon "streusel"

(regular wine pairing: chateau st. michelle riesling, columbia valley)

(executive wine pairing: vin de glaciere late harvest riesling, selenium valley)

Throughout Valentine's weekend, Hawaii's top lounge musicians will take the stage at Twist with the incredible *Dueling Piano* duo of Ginny Tiu and Noly Paa taking the stage on Friday, February 12. Ukulele virtuoso *Taimane Gardner* will be featured on Saturday, February 13. On Valentine's Day, February 14, the *Hot Club of Hulaville* will perform its unique sounds of romantic gypsy jazz.

Twist at Hanohano's three-course Core Menu will also be available throughout the Valentine's Day weekend.

Complimentary valet parking and validated self-parking for four hours will be available at Sheraton Waikiki. For reservations or more information, please call the dining desk at 921-4600 or send an email to tdrc.hawaii@starwoodhotels.com.



Chef Ryan Loo and Shaun Ono

Bali Steak & Seafood Valentine's Day sweethearts dinner

Hilton Hawaiian Village's Bali Steak & Seafood, the only restaurant named a Four Diamond Restaurant by AAA Hawaii for 21 consecutive years, is offering a five-course dinner for sweethearts this Valentine's Day weekend.

The dinner begins with a starter, then moves to a dish of roasted diver scallop and potato crusted oyster, followed by a salad of Hirabara greens with crisp apple and honey thyme vinaigrette. Diners can choose among the following for their entrée: roast rack of Colorado lamb, pacific moi, or charred prime filet mignon and king crab lau lau. The dessert is a poppy seed angel food cake and Hawaiian vintage chocolate terrine with mocha almond crème. The dinner is \$110 per person, excluding tax and gratuity.

Since Valentine's Day falls on a Sunday before Presidents' Day, kama'aina can make it an entire weekend to celebrate their love. In addition to the Bali Steak & Seafood special menu offered on Saturday, February 13 and Sunday, February 14, Hilton's kama'aina special is being offered for those who want to staycation. The rate begins at \$149 per night, and comes with special \$10 daily self-parking, 50 percent off lagoon water toys, which include waterbees, kayaks and watercycles; and 20 percent off Mandara Spa treatments.



There's something for everyone at the 22-acre resort: Waikiki's largest pool – the 10,000-square-foot Super Pool, the Paradise Pool with a 77-foot-long slide, the rejuvenated Duke Kahanamoku Lagoon, more than 30 species of wildlife including 8 South African penguins, 16 dining outlets, 90 shops and entertainment, including the legendary Jerry Santos of Olomana on Friday evenings. There's also the independently owned and operated *Mandara Spa* in the Kalia Tower that offers a YSPA Menu just for teenagers with treatments that include a Heavenly Massage, Surfers' Scrub, Fabulous Fruity Facial and Acne Attack Facial. Dining reservations for Bali Steak & Seafood's Valentine's Day weekend on February 13 and 14 can be made by calling the resort at (808) 949-4321, and asking for dining reservations. For room reservations, call the resort directly at (808) 949-4321 and ask for rate code P3. Proof of Hawaii residency required. For more information about the Hilton Hawaiian Village, visit www.hiltonhawaii.com.

Sony Open in Hawai'i

Daily tickets to the Sony Open in Hawaii are available at the American Express Desk at Tapa Tower at the Hilton Hawaiian Village Beach Resort & Spa for this week's tournament at Waialae Country Club.

Also, E Noa Trolley shuttle service is available for \$2 per way from Waikiki to Waialae Country Club every 30 minutes. Hilton's Tapa Tower Bus Depot is one of the trolley stops.

Award-winning Azure Restaurant presents a delectably romantic four-course Valentine's menu

Azure Restaurant, winner of the 2010 Hale Aina "Best New Restaurant" award, celebrates Valentine's Day on Sunday, February 14 with an unparalleled four-course dinner featuring appetizers, entrees and desserts prepared with fresh indigenous ingredients. Located in The Royal Hawaiian, a Luxury Collection Resort, Azure is perched along Waikiki's beachfront under the canopy of The Royal Hawaiian's dramatic architecture. Executive Chef Jon Matsubara proudly presents his exceptional menu from 5:30 to 9 p.m. (last seating at 9 p.m.) and is priced at \$150 per couple or \$75 per person.

AZURE RESTAURANT Valentine's Day Menu

1st Course

Aphrodisiac Appetizer for 2

*Chilled Kumamoto Oysters
Lemon Dashi, Bonito Crème Fraiche, Caviar
&
Cold Smoked Hamachi Sashimi & Ikura
Avocado, Champagne & Ginger Vinaigrette*

2nd Course

*AZURE Shellfish Cappuccino
Crab, Shrimp & Bouillabaisse*

3rd Course

Entrée Choice Of

"Beef & Reef"

*Kona Lobster & Rib Eye Steak
Hamakua Mushroom, Wasabi Potato Puree, Sauce Bordelaise*

or

Uni Risotto & Shrimp Scampi Wailua Asparagus, Marinated Grape Tomato

or

Steamed Whole Moi & King Crab, limu, Inamono, Ginger & Scallion Sauce, Baby Bok Choi, Shiitake Mushroom

4th Course

Dessert

*Waiialua Estate Chocolate Tasting
Kona Coffee Pot o'Crème with Chocolate Sorbet & Island Fresh Fruits
Chocolate Flourless Cake
Macadamia Nut Cannoli with Chocolate Mousse
Chocolate Peanut butter Square*

For reservations or more information, please contact the Starwood dining desk at 921-4600 or e-mail tdrc.hawaii@starwoodhotels.com. All applicable taxes will be applied and a 17 percent gratuity will be applied for parties of seven or more. A credit card will be required to secure a reservation and cancellations must be received 72 hours in advance. Cancellations received within 72 hours will be assessed a cancellation fee equal to the meal price (plus tax) for the entire party.



AZURE
restaurant

“For the Love of Cocktails” A Valentines Weekend at Lewers Lounge, Halekulani February 12-14, 2010

Ultimat Obsession
A Compelling and Captivating Concoction
Ultimat Vodka, Grand Marnier and Pomegranate

Lewer's Tryst
A Rendezvous of Spirits
Pinky Vodka, Tuaca, Grand Marnier and Strawberries

Forbidden Fruit
Ambrosia from the Temptress of Eden,
Pama, 10 Cane Rum, Cointreau and a Splash of Cranberry Juice

Seductive Sparkler
Experience the Panache of Prosecco and the
Passion of Pomegranate in this Luscious Libation

Moulin Rouge
Rekindle Romance with the Sparkling Stars of
Champagne, Chambord and Canton Liqueur

(Specialty Valentine cocktails are available for \$12 each.)

Lewers Lounge Service & Entertainment Information:

- Lewers Lounge is open nightly from 7:30 p.m. to 1:00 a.m.
- Sweet & Savory bar menu served 7:30 p.m. – 12:30 a.m.
- Entertainment from 8:30 p.m. to midnight, Sunday through Thursday and 8:30 p.m. to 12:30 a.m. Friday & Saturday.
- Attire: Collared shirts and slacks for gentlemen, evening attire for ladies.
- Lewers Lounge is open to 21+ patrons
- Sunday, Monday and Tuesday feature classics by Noly Pa'a (pianist)
- Wednesday and Thursday feature the renowned duo of Bruce Hamada (bass/vocals) and Jim Howard (piano) performing an extensive repertoire of contemporary and timeless standards
- Friday and Saturday spirited Rocky Holmes (flute/clarinet) joins the accomplished Tennyson Stephens for a night of sophisticated jazz.
- Entertainment calendar is subject to change.
- Complimentary Valet



Outrigger hosts annual Valentine's Day Vow-Renewal Ceremony

Culturally-rich renewals on the beach make a treasured Valentine's Day gift

With the golden sands of Waikiki between their toes, guests of Outrigger Waikiki on the Beach and Outrigger Reef on the Beach will *Hoi Hou Ke Aloha*, "fall in love all over again," at a truly unforgettable, complimentary Valentine's Day Vow Renewal Ceremony on February 14, 2010.

"Outrigger's culturally-rich vow renewal is a magical way for couples to reaffirm their love and is leaps and bounds more memorable than a dozen red roses," said director of sales and marketing director Patsy Narimatsu. "During the Valentine's Day weekend, couples can take advantage of our 'bed and breakfast' rates of just \$229 at Outrigger Reef and \$219 at Outrigger Waikiki -- this special package includes gorgeous partial-ocean view accommodations and daily breakfast for two."

Adorned with fresh flower lei, participants will be led to the water's edge in front of Outrigger Reef hotel to be honored with a graceful hula and serenaded with Hawaiian song. The non-denominational Hawaiian ceremony is conducted by a practicing kahu (priest) who recites a traditional Hawaiian chant. They are blessed with a gentle sprinkling of sea water before reciting vows in the Hawaiian language.



At the ceremony close, couples can toast to love and aloha with complimentary champagne or mimosas. All participants also receive a commemorative certificate and a three-by-five photo that captures this romantic moment in time.

Love is also found in the special Valentine's Day menu at Kani Ka Pila Grille, the poolside restaurant at Outrigger Reef on the Beach. Elegant entrée options include: filet mignon with wild mushroom demi glaze, beef tenderloin medallions, fire grilled Opakapaka with basil pesto, duck breast with honey and ginger, pork loin chops with wild mushroom veloute and rack of lamb with balsamic reduction. Savory sides featured are lobster and chive bisque plus spinach and strawberry salad. Making life even sweeter, couples that participate in Outrigger's Valentine's Day Vow Renewal ceremony are given a complimentary plate of chocolate-covered strawberries, with the purchase of two entrees that same day.

Advance reservations for the Valentine's Day Hawaiian Vow Renewal are required and are now being taken on a first come, first served basis for those guests holding confirmed reservations at either of the two beachfront hotels over Valentine's Day. Concierge may be reached as follows:

- Outrigger Waikiki on the Beach - email owk.hookipa@outrigger.com or call 808-923-0711*
 - Outrigger Reef on the Beach -- email orf.concierge@outrigger.com or call 808-923-3111*.
- (*Long distance phone charges apply.)

For those who cannot attend the special Valentine's Day Hawaiian Vow Renewal Ceremony, Outrigger holds a similar ceremony every Tuesday and Friday at 8 a.m. and it is open to guests of the Outrigger Waikiki on the Beach and the Outrigger Reef on the Beach (champagne, photo and lei are not included as part of the normal twice-weekly ceremony). Since the program's inception, more than 4,000 vows have been exchanged. Couples must sign up at their respective hotel's concierge desk by 3:00 p.m. the day before.

Hotel reservations can be made by contacting your preferred travel agent or call toll free 1-800-OUTRIGGER (1-800-688-7444) within the United States, Guam and Canada. Elsewhere call direct to 303-369-7777 (long distance charges apply). Or, visit www.outriggerreef.com / www.outriggerwaikiki.com or e-mail reservations@outrigger.com.

News from Royal Star

Best Transportation in Hawai'i award from The Knot

Congratulations to Royal Star who recently accepted a Best of Weddings award for 'Best Transportation in Hawai'i' from The Knot. Brides voted the company #1 for courteous and helpful service and the best, most reliable equipment.

2010 Driver of the Year

Also at Royal Star, their 2010 Driver of the Year award was given to Uncle Jerry Kaina, a transportation industry veteran of 40 years. This is his second Driver of the Year Award. He also earned Driver of the Month three times in 2009 with perfect attendance and on-time records, no accidents, fuel savings and rave reviews.



Reminder from Waikīkī Community Center

The annual Ala Wai Challenge takes place at 8 am on Sunday, January 24 at Ala Wai Neighborhood Park. Join us for a day of fun outrigger canoe races, crafts and entertainment. Food booths will also be available

Waikīkī Wiki Wiki Wire - Newsletter Deadline

Waikīkī-related news and information submitted for the weekly Waikīkī Wiki Wiki Wire should be received no later than 2 pm Wednesday for newsletters published and distributed the same evening. Information received after the deadline will be considered for inclusion in the following issue.

Photos which accompany stories are always welcome and, for best results, should be attached to the email as a separate jpeg - maximum 1 MB please. Mahalo.

Waikīkī Hula Show at the Kūhiō Beach Hula Mound

Authentic Hawaiian music and hula shows by Hawai'i's finest hula *hālau hula* (dance troupes) and Hawaiian performers. Opens with traditional blowing of conch shell.

Tues-Thurs-Sat-Sun, weather-permitting from **6:00-7:00 p.m.** at the Kūhiō Beach Hula Mound, near Duke Kahanamoku statue, beachside at Uluniu & Kalākaua Ave. in Waikīkī.

FREE and open to the public. Outdoors, casual, seating on the grass; beach chairs, mats, etc. okay. Cameras welcome. Presented by the City & County of Honolulu, the Hawai'i Tourism Authority and Waikīkī Improvement Association.

For information, call Marnie Weeks, Producer, Kūhiō Beach Hula Shows, 843-8002.

Week-nights

Every Tuesday – Ainsley Halemanu and Hula Hālau Ka Liko O Ka Palai

Every Thursday – Joan "Aunty Pudgie" Young and Puamelia

Weekends

Sat Jan 16 – Joan S. Lindsey and the Joan S. Lindsey Hula Studio

Sun Jan 17 – Colsen Kanei and Halau Kawaiianuhealehua



Event information + Waikīkī parade watch (courtesy of the City)

January 11-17, 2010

6:30AM Starts
5:30PM Ends

SONY OPEN GOLF TOURNAMENT IN HAWAII by Sony Open In Hawaii.
Avoid Kahala area because of increased traffic.

NO PARKING AREAS: 1) KAHALA AVENUE, odd address side, Pueo Ave to Kealaolu Ave (for shuttle bus), 2) KAHALA AVENUE, both sides, Kealaolu Ave to golf course property, 3) PUEO STREET, odd address side, Kahala Ave to Aukai Ave (for shuttle bus), 4) 18th AVENUE even address side, near Iwalani Pl., fronting Hawaii Film Studio (for shuttle bus), 5) FARMERS ROAD, odd address side, 4777 (one-half block from Kealaolu Ave) to Kealaolu Ave. 6) FARMERS ROAD, even address side, Kealaolu Ave to Makaiwa St., 7) KAIMOKU PLACE, golf course side, from Kaimoku Way to makai property line of 1108 Kaimoku Pl., 8) KAIMOKU PLACE, odd address side, for its entire length, including the cul-de-sac, 9) KAIMOKU WAY, both sides for its entire length, 10) KEALAOLU AVENUE, both sides, Wai'alaie Ave to Kahala Ave., 11) KEALAOLU PLACE, odd address side, for its entire length, 12) MAKAIWA STREET, odd address side, Kilauea Ave to Farmers Rd., 13) MAKAIWA STREET, even address side, Farmers Road to Pueo St., 14) MOHO STREET, odd address side, for its entire length.

Contact: Sony Open in Hawaii 808-523-7888

Email: friend@friendsofhawaii.org

For more info, visit their website:

<http://www.sonyopeninhawaii.com/index.html>

January 18, 2010 Monday

9:00AM Starts
12noon Ends

DR. MARTIN LUTHER KING JR. DAY PARADE sponsored by Martin Luther King Coalition. The event is expected to have 2,000 marchers, 100 vehicles, 20 floats, 6 bands. It will start at Ala Moana Park, to Ala Moana Blvd., to Kalākaua Ave., to Monsarrat Ave., end at Waikīkī Shell Parking Lot in Queen Kapiolani Park. Contact: Patricia Anthony 384-4038 Fax: 672-4129

The above is based on the most current information available from the event organizers as of the date of this publication. For more information, call the Department of Transportation Services, 808-527-6009.



Waikīkī Improvement Association

2255 Kūhi Avenue, Suite 760
Honolulu, HI 96815

Phone: 808-923-1094
Fax: 808-923-2622

If you would like to share news with other members of WIA, please send your info to editor@waikikiimprovement.com.

Check out our website at:

www.waikikiimprovement.com